

THE INFORMATION IN THIS REPORT CAME FROM THE RESEARCH OF JULIANA BASTOS DE MELLO '22 AND FRANCESCA WOOD MANCILLA '22 AS PART OF THEIR SOCIOLOGY MAJOR CULMINATING EXPERIENCE IN WINTER 2022. INFORMATION ABOUT THE RESEARCH PROCESS OR ACCESS TO ADDITIONAL FINDINGS IS ACCESSIBLE UPON REQUEST.

JULIANA
FRANCESCA

julianabastosdemello@gmail.com
francescawoodh@gmail.com

SPECIAL THANKS TO PROF. DOUGLAS MOODY AND PROF. MARIA CLARA DE GREIFF FOR THEIR GUIDANCE AND RESOURCES THROUGH OUR PROJECT. ADDITIONAL THANKS TO THE FARMWORKERS WE SPOKE TO AND THE SUPPORT OF THE UPPER VALLEY COMMUNITY.

SOURCES

Interviews with Alberto, Camilo, Mateo, Miguel, and Silvio.*

De Greiff, M.C. 2022. *Hands that Speak*.

Kohl-Arenas, E. 2015. *The Self-Help Myth*.

Hearts You Hold

Migrant Justice

National Center for Farmworker Health

USDA, Economic Research Service

Vermont Farm to Plate

Vermont Migrant Farmworker Solidarity Project

* Pseudonyms used for privacy concerns

AREAS OF NEED AMONGST MIGRANT FARMWORKERS IN THE UPPER VALLEY

A VERMONT CASE STUDY

DARTMOUTH
DEPARTMENT OF Sociology

POPULATION OVERVIEW

They work
12 hour
shifts
6 days
per week

They
live+work
at the farm

Seldom
leave the
farm

VT farms hire
~1500
migrant
farmworkers

Most are
men
from Mexico in
their 20s who
only speak
Spanish

They make
<\$25k
a year, staying
~5 years
in the U.S.

Salaries
cover **rent**
but not **food**

Most
lack work
permits



EMOTIONAL CHALLENGES



Overcoming risks of crossing the border



Fearing ICE due to their legal status



Adapting to U.S. culture and climate



Missing family and friends back home



Limited free time given work schedule



Feelings of isolation and loneliness



Blurred lines between life and work

*"Working and living here, sometimes you
feel like one of the cows"*

*- Miguel**

* Pseudonym used for privacy concerns

Data collected through scholarly research and fieldwork at a dairy farm in Vermont

MAIN AREAS OF NEED



MATERIAL



Workers need **affordable healthcare** for work accidents and health conditions

MEDICAL

Workers need **rides to appointments** and **affordable grocery delivery services**



TRANSPORT



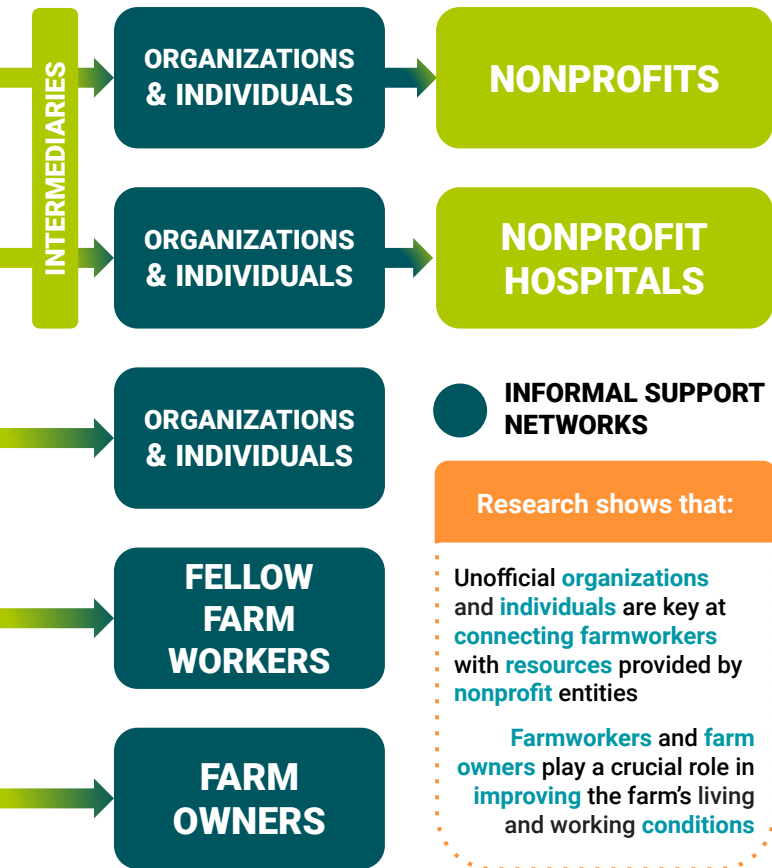
COMMUNITY



Workers need **good relationships** with fellow workers and farm owners

LIVING & WORKING CONDITIONS

HOW NEEDS ARE MET



ASSISTANCE BARRIERS

1

Nonprofits often lack **direct community access**

- They are understaffed and underfunded
- There is a lack of Spanish-speaking staff

2

Farm dynamics play a crucial role

- Farm owners need to provide proper work and living conditions
- Farmworkers should be empowered to lobby for their rights

3

Systematic change is needed

- U.S. immigration law is predatory and exploitative
- Migrant farmworkers need a path towards legal work authorizations



HOW YOU CAN HELP

Get involved and donate to local organizations and nonprofits

- **FUERZA** @fuerza_farmworkers_fund
- **Migrant Justice** migrantjustice.net
- **Hearts You Hold** heartsyouhold.org

1

Gain awareness of the labor practices at your local farm and demand improved living and working conditions for employees

2

Prioritize and demand immigration law reform from your representatives

- **Migrant Justice** is particularly active in the legal advocacy sector

3



Introduction - Link Tree Deliverable

This Link Tree is one of the outcomes of a term-long study that incorporates its findings with the goal to generate community impact. The study aimed at understanding the main needs of the migrant farmworker community in the Upper Valley, as well as the networks of support that allow these workers to have these needs met. One of our biggest findings is that most of the assistance received by migrant farmworkers comes from informal networks of support, including unofficial organizations, volunteer individuals, the farmworkers themselves, and the farm owner. With this in mind, this Link Tree has been created with the goal to increase access to these informal networks to workers who might otherwise not have access to it.

The Link Tree is intended to be given to members of FUERZA, an unofficial organization that assists migrant farmworkers in Vermont and New Hampshire. As discussed with Maria Clara de Greiff, one of the founders of FUERZA, this is meant to be a living document, continuously updated by the organization so that workers can have the most up-to-date information on the existing assistance whenever needed. The Link Tree is the most suited platform for our target population due to its phone-friendly format, as all the workers have access to phones, and the easiness with which it can be shared in WhatsApp group chats, the most used texting platform for the workers. We believe that having an organized and straightforward list of resources in Spanish will have a meaningful impact on the lives of migrant farmworkers in the Upper Valley.

The Link Tree can be found here: <https://linktr.ee/farmworkerfunds>